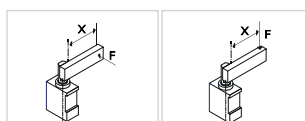


## ULY40040A\_K0

### 6 ROD ORIENTATION

6

E = East  
O = West  
N = North  
S = South



Bore Ø	Min. pull force 0,5 MPa	Max. push force 0,5 MPa	Max. torque 6 Nm X=100 mm	Max. deflection moment 7,5 Nm X=100 mm	Weight
40 mm	200 N	3100 N	± 0,06 mm	± 0,03 mm	5,7 Kg

Min./Max. operating pressure: **0,4 / 0,6 MPa**

Operating temperature: **5° ÷ 45° C**

Strokes in mm: **40**

Electronic sensor with M12 swivel connector, from 0° to 90°

Supply voltage: **10 ÷ 30 Vdc**

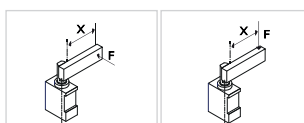
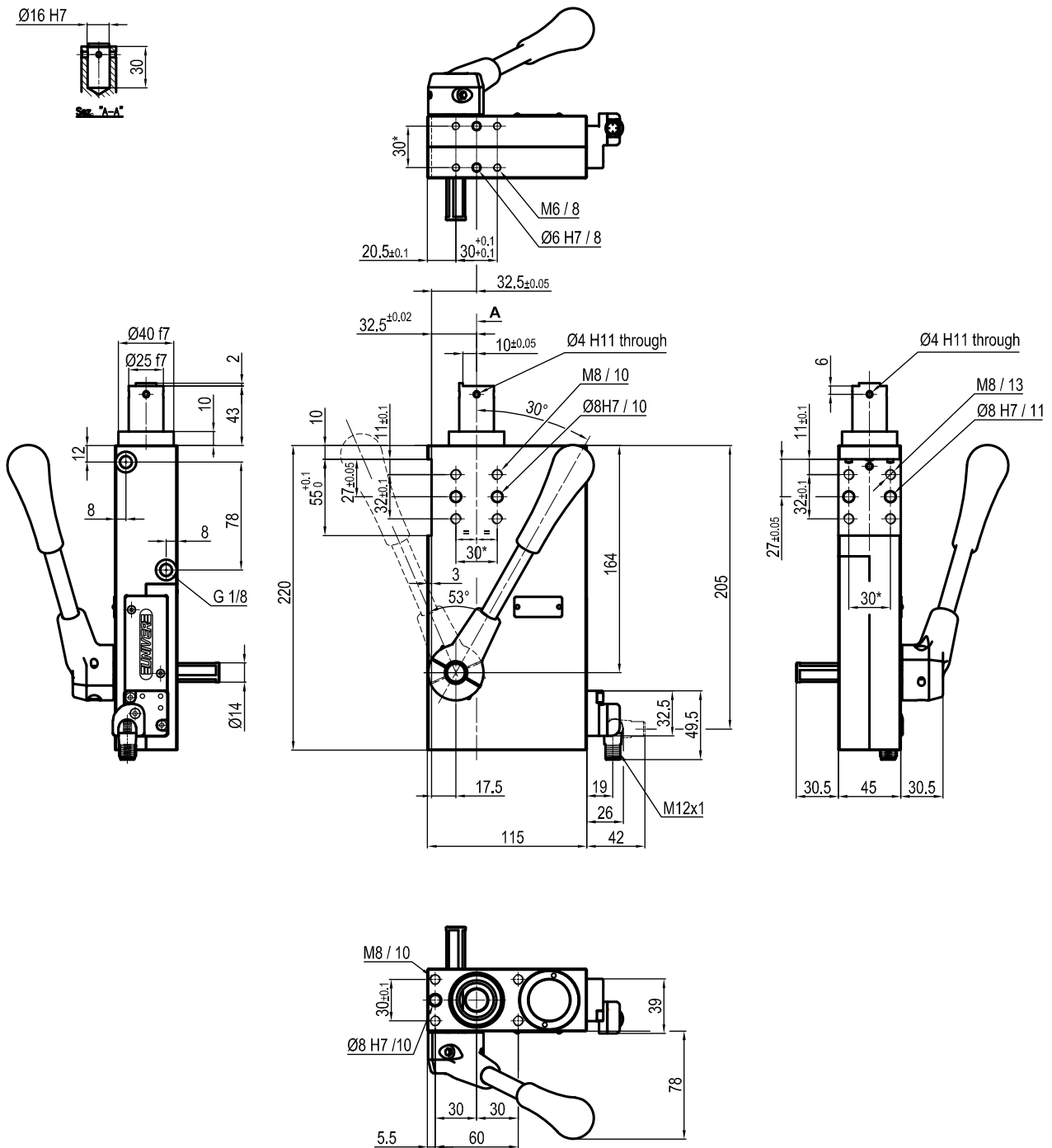
IP code: **IP 65**

Manual actuation max torque: **40 Nm**

\* : TOLERANCE BETWEEN DOWEL HOLES ± 0,02, BETWEEN SCREW HOLES ± 0,1

Subject to technical modifications without notice

Rev. 03 07.06.21



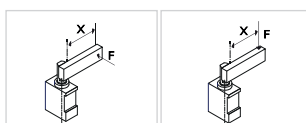
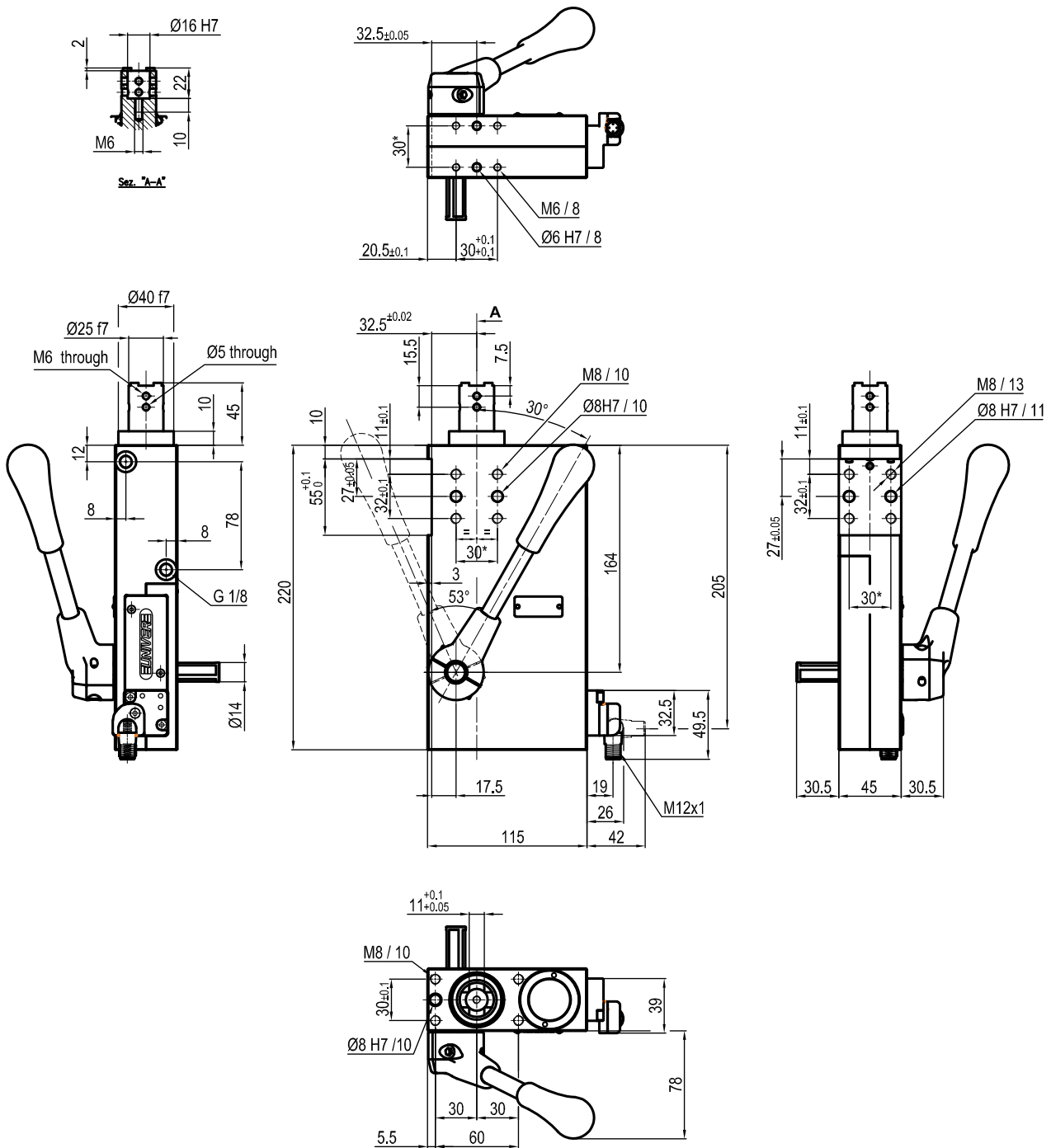
Bore Ø	Min. pull force 0,5 MPa	Max. push force 0,5 MPa	Max. torque 6 Nm X=100 mm	Max. deflection moment 7,5 Nm X=100 mm	Weight
40 mm	200 N	3100 N	± 0,06 mm	± 0,03 mm	5,7 Kg

Min./Max. operating pressure: **0,4 / 0,6 MPa**  
 Operating temperature: **5° ÷ 45° C**  
 Strokes in mm: **40**  
 Electronic sensor with M12 swivel connector, from 0° to 90°  
 Supply voltage: **10 ÷ 30 Vdc**  
 IP code: **IP 65**  
 Manual actuation max torque: **40 Nm**

\* : TOLERANCE BETWEEN DOWEL HOLES ± 0,02, BETWEEN SCREW HOLES ± 0,1

Subject to technical modifications without notice

Rev. 02 07.06.21



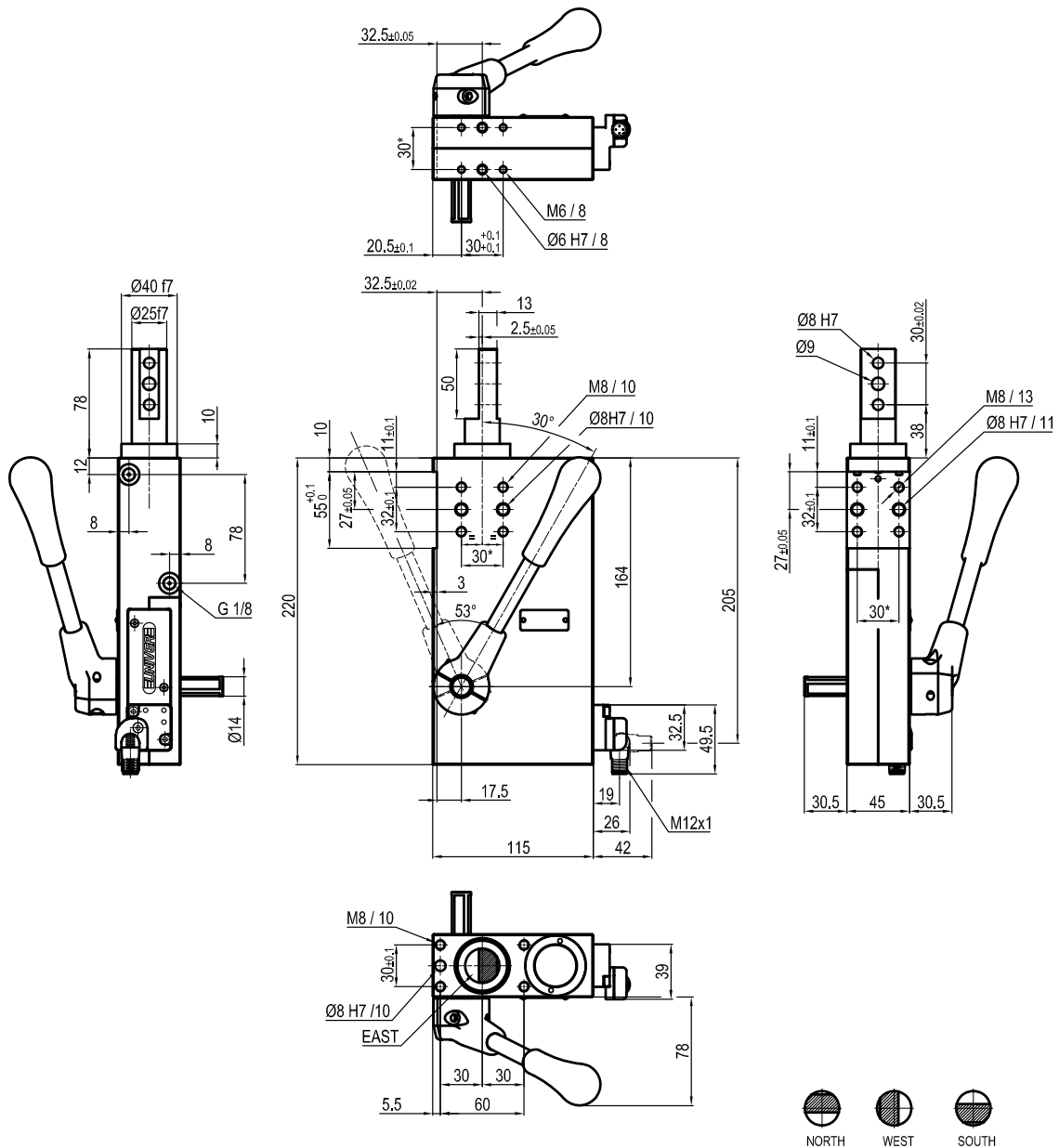
Bore Ø	Min. pull force 0,5 MPa	Max. push force 0,5 MPa	Max. torque 6 Nm X=100 mm	Max. deflection moment 7,5 Nm X=100 mm	Weight
40 mm	200 N	3100 N	± 0,06 mm	± 0,03 mm	5,7 Kg

Min./Max. operating pressure: **0,4 / 0,6 MPa**  
 Operating temperature: **5° ÷ 45° C**  
 Strokes in mm: **40**  
 Electronic sensor with M12 swivel connector, from 0° to 90°  
 Supply voltage: **10 ÷ 30 Vdc**  
 IP code: **IP 65**  
 Manual actuation max torque: **40 Nm**

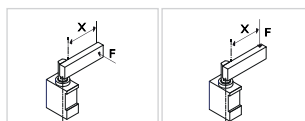
\* : TOLERANCE BETWEEN DOWEL HOLES ± 0,02, BETWEEN SCREW HOLES ± 0,1

Subject to technical modifications without notice

Rev. 03 07.06.21


**ULY40040D\_K0**
**6**
**6 STANGEN-ORIENTIERUNG**

E = Ost  
O = West  
N = Nord  
S = Süd



Durchmesser Ø	Min. Zugkraft 0,5 MPa	Max. Druckkraft 0,5 MPa	Max. Moment 6 Nm X=100 mm	Max. Durchbiegungs- Moment 7,5 Nm X=100 mm	Gewicht
40 mm	200 N	3100 N	± 0,06 mm	± 0,03 mm	5,7 Kg

Min / Max Betriebsdruck: **0,4 / 0,6 MPa**  
Betriebstemperatur: **5° ÷ 45° C**

Hub in mm: **40**

Elektronischer Sensor mit M12 schwenkbarem Stecker,  
von 0° bis 90° orientierbar

Versorgungsspannung: **10 ÷ 30 Vdc**

Schutzart: **IP65**

\* : TOLERANZ ZWISCHEN STIFTBOHRUNGEN ± 0,02 , GEWINDEBOHRUNGEN ± 0,1

Technische Änderungen vorbehalten

Rev. 01 07.06.21