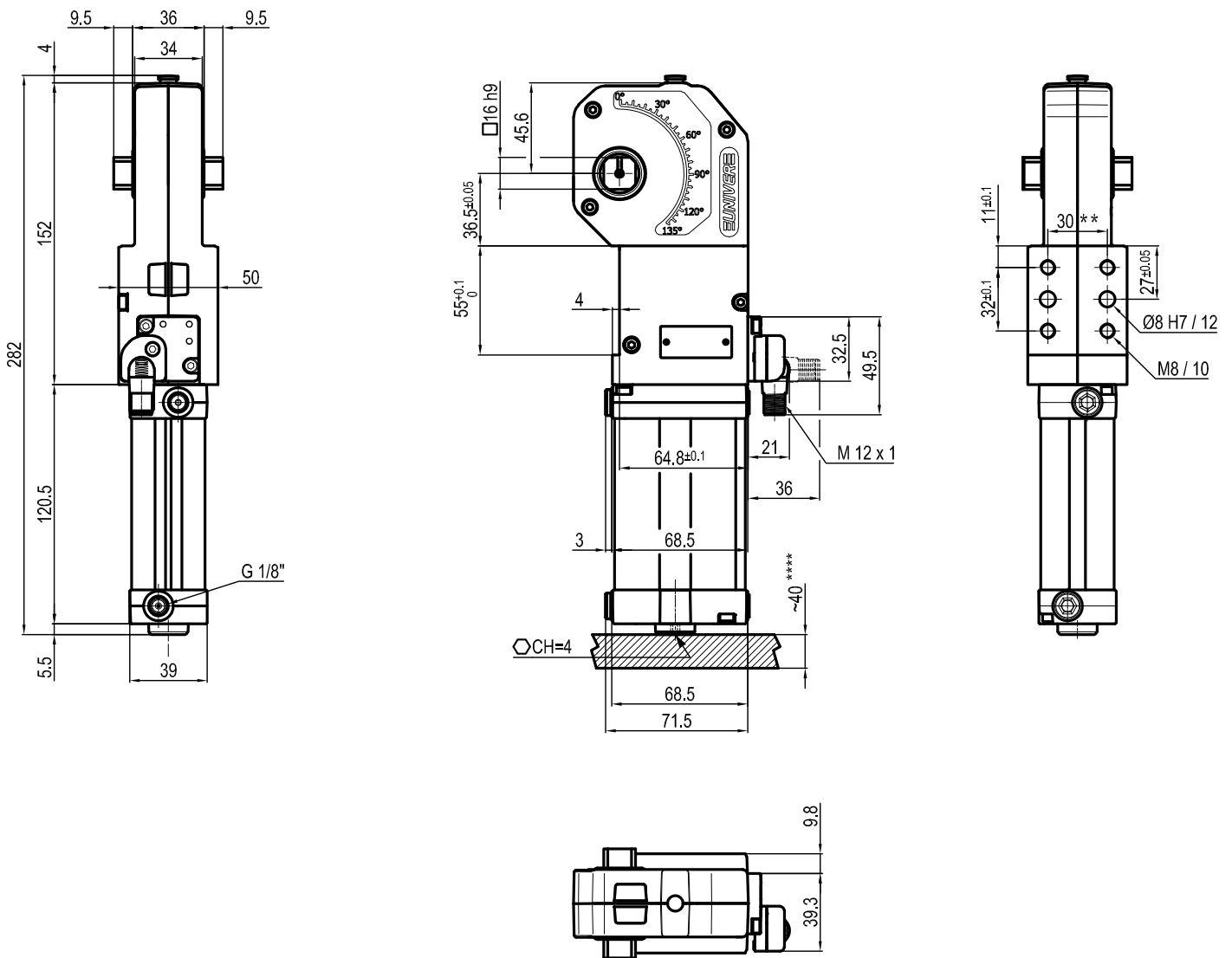


*: TOLERANCE BETWEEN DOWELS $\pm 0,02$, BETWEEN SCREW HOLES $\pm 0,1$
 **: AREA TO ACCESS ANGLE ADJUSTMENT

Bore \varnothing	Holding moment	Clamping moment (0,5 MPa)	Weight (clamping arm not included)
40 mm	600 Nm	170 Nm	1,6 Kg

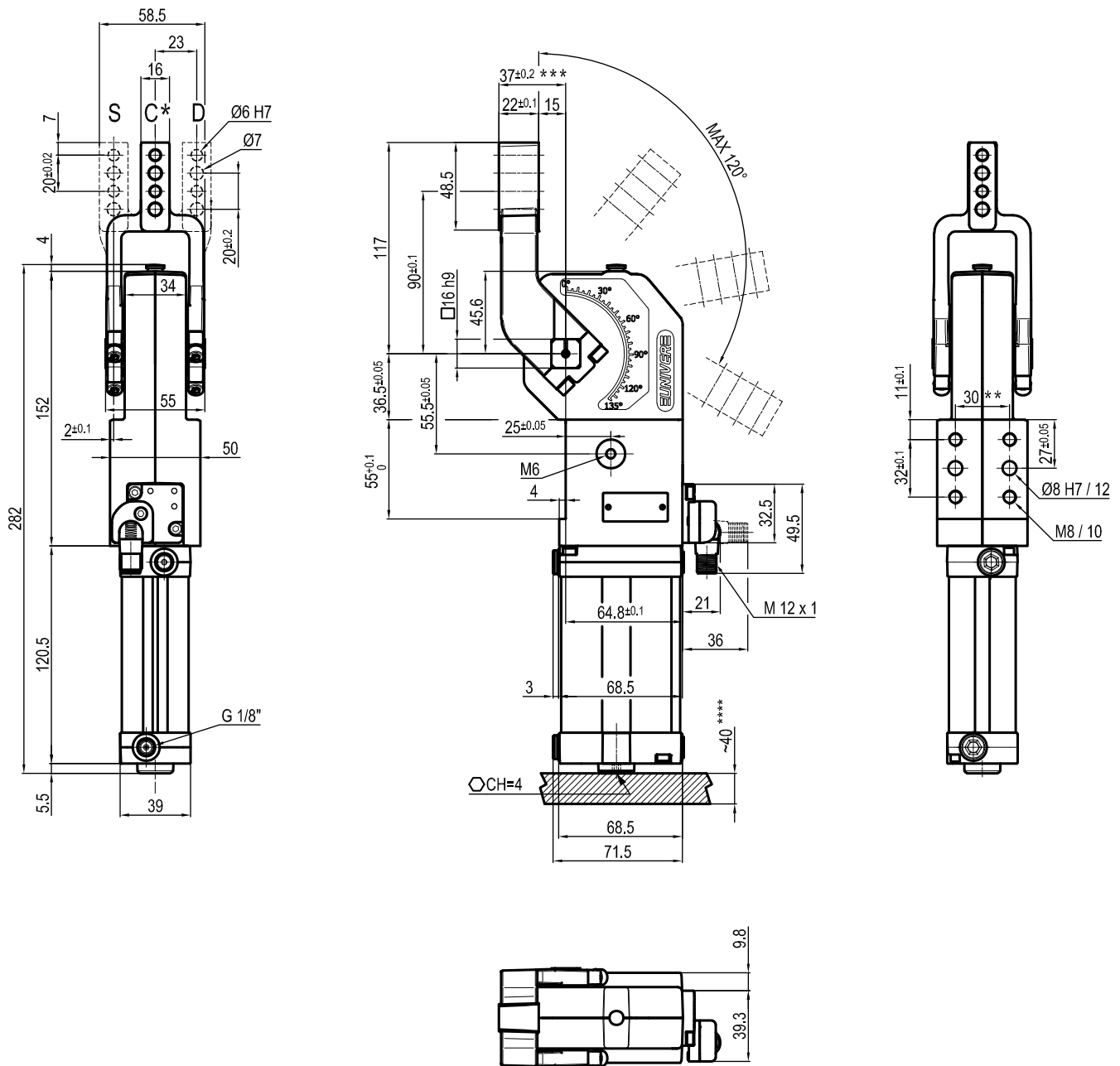
Min./Max. operating pressure: **0,4 / 0,6 MPa**
 Operating temperature: **5° ÷ 45° C**
 Opening angle: **adjustable**
 Without arm
 Electronic sensor with M12 swivel connector, from 0° to 90°
 Supply voltage: **10 ÷ 30 Vdc**
 IP code: **IP 65**
 Pneumatic ports on both sides



*: TOLERANCE BETWEEN DOWELS $\pm 0,02$, BETWEEN SCREW HOLES $\pm 0,1$
 **: AREA TO ACCESS ANGLE ADJUSTMENT

Bore \varnothing	Holding moment	Clamping moment (0,5 MPa)	Weight (clamping arm not included)
40 mm	600 Nm	170 Nm	1,6 Kg

Min./Max. operating pressure: **0,4 / 0,6 MPa**
 Operating temperature: **5° ÷ 45° C**
 Opening angle: **adjustable**
 Without arm
 Electronic sensor with M12 swivel connector, from 0° to 90°
 Supply voltage: **10 ÷ 30 Vdc**
 IP code: **IP 65**
 Pneumatic ports on both sides



* : "E" CENTRAL - Ø50 / Ø63 mm SIZES COMPATIBLE
 ** : TOLERANCE BETWEEN DOWELS ± 0,02, BETWEEN SCREW HOLES ± 0,1
 *** : TOLERANCE AT 80 mm FROM PIVOT POINT
 **** : AREA TO ACCESS ANGLE ADJUSTMENT

UCIP400 __ AK0
6 7
6 ARM STYLE

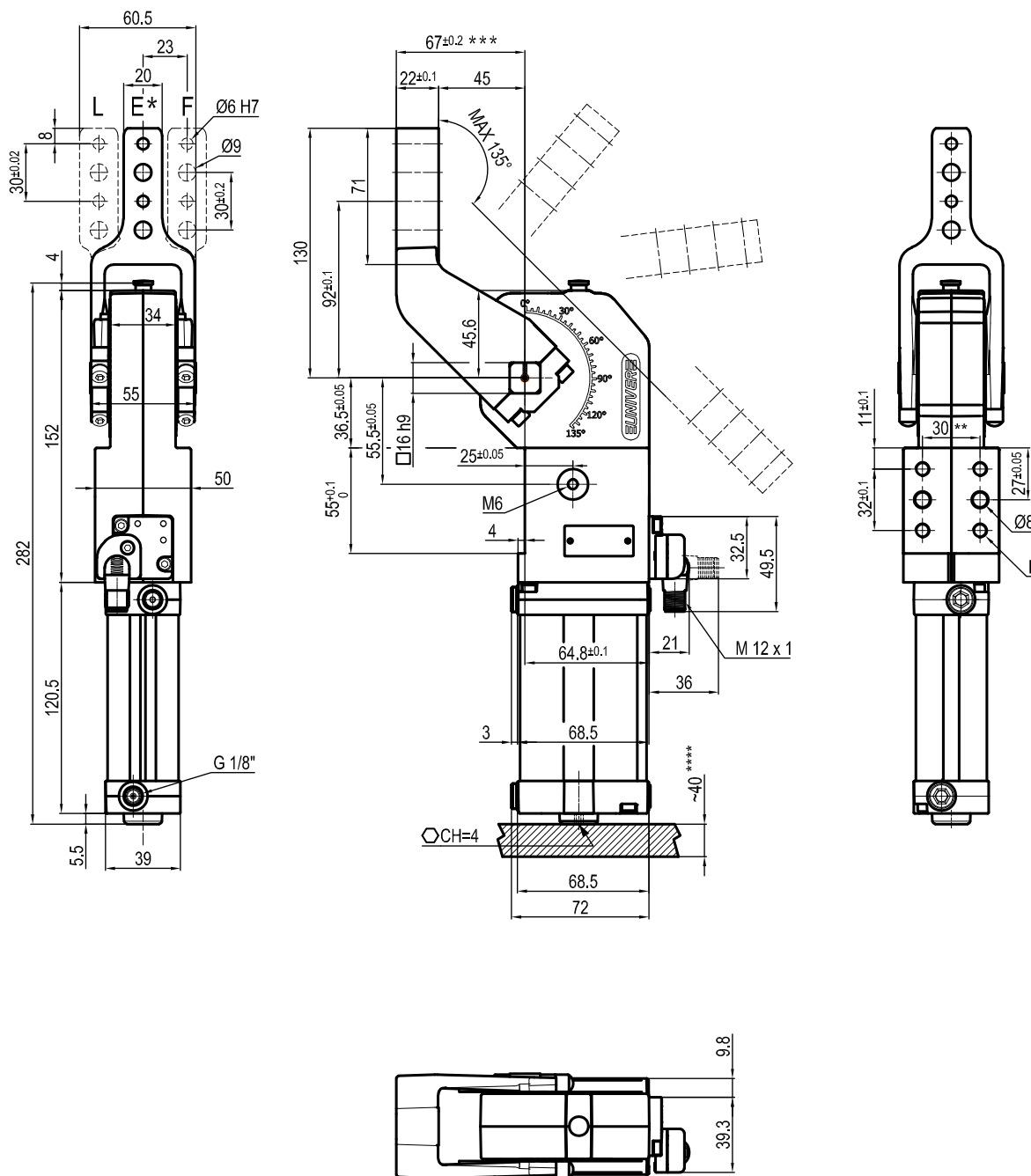
7 ARM TYPE

C = Central
 S = Right
 D = Left

A = Aluminium
 S = Steel

Bore Ø	Holding moment	Clamping moment (0,5 MPa)	Weight (clamping arm not included)
40 mm	600 Nm	170 Nm	1,6 Kg

Min./Max. operating pressure: **0,4 / 0,6 MPa**
 Operating temperature: **5° ÷ 45° C**
 Opening angle: **adjustable from 0° to 120°**
 Arm position: **180°**
 Electronic sensor with M12 swivel connector, from 0° to 90°
 Supply voltage: **10 ÷ 30 Vdc**
 IP code: **IP 65**
 Pneumatic ports on both sides



* : "E" CENTRAL - Ø50 / Ø63 mm SIZES COMPATIBLE
 ** : TOLERANCE BETWEEN DOWELS ± 0,02, BETWEEN SCREW HOLES ± 0,1
 *** : TOLERANCE AT 80 mm FROM PIVOT POINT
 **** : AREA TO ACCESS ANGLE ADJUSTMENT

UCIP400 __ AKO
6 7
6 ARM STYLE

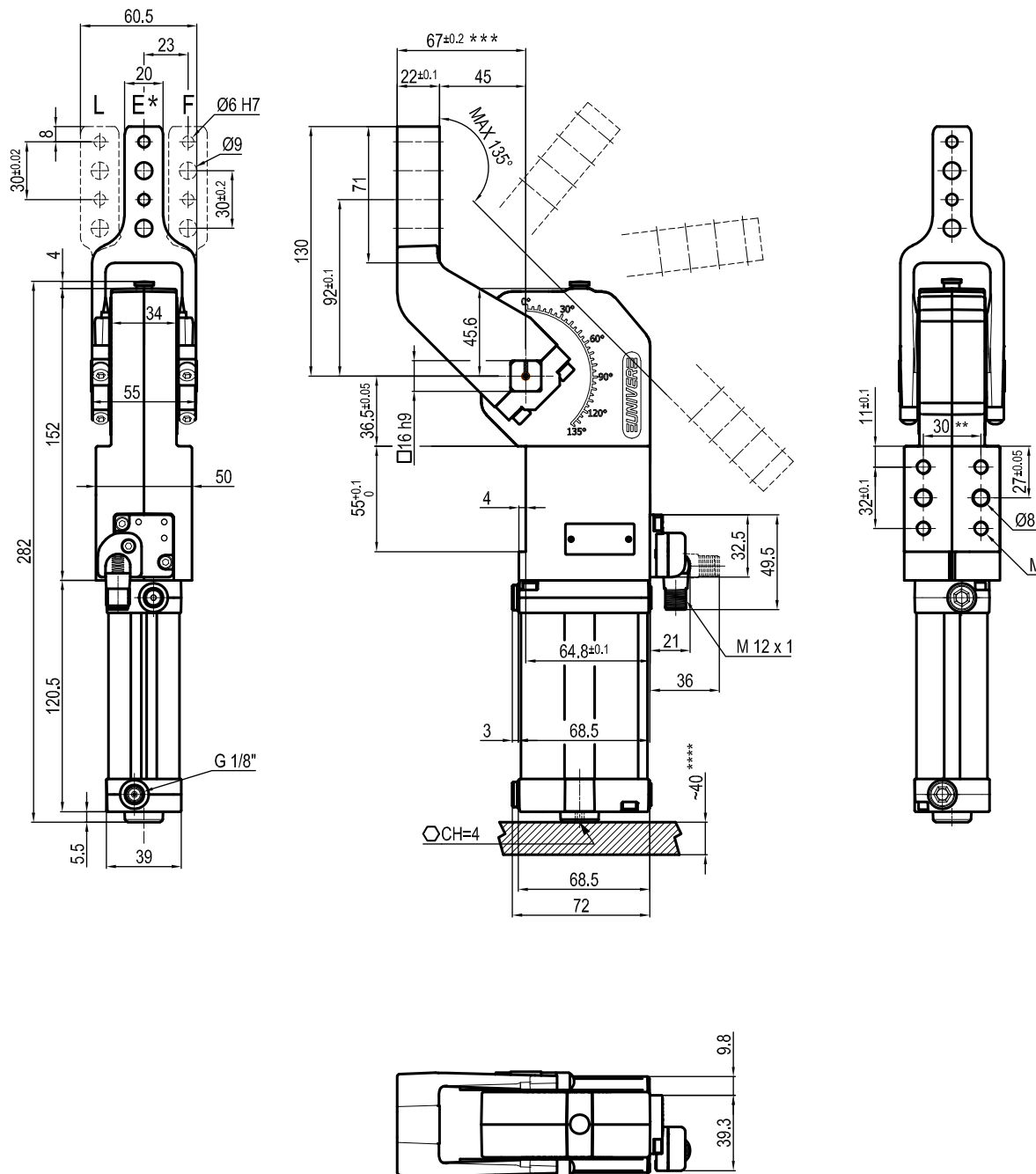
E = Central
 F = Right
 L = Left

7 ARM TYPE

A = Aluminium
 S = Steel

Bore Ø	Holding moment	Clamping moment (0,5 MPa)	Weight (clamping arm not included)
40 mm	600 Nm	170 Nm	1,6 Kg

Min./Max. operating pressure: **0,4 / 0,6 MPa**
 Operating temperature: **5° ÷ 45° C**
 Opening angle: **adjustable from 0° to 135°**
 Arm position: **180°**
 Electronic sensor with M12 swivel connector, from 0° to 90°
 Supply voltage: **10 ÷ 30 Vdc**
 IP code: **IP 65**
 Pneumatic ports on both sides



* : "E" CENTRAL - Ø50 / Ø63 mm SIZES COMPATIBLE
 ** : TOLERANCE BETWEEN DOWELS ± 0,02, BETWEEN SCREW HOLES ± 0,1
 *** : TOLERANCE AT 80 mm FROM PIVOT POINT
 **** : AREA TO ACCESS ANGLE ADJUSTMENT

UCIP400 __ NK0
6 7
6 ARM STYLE

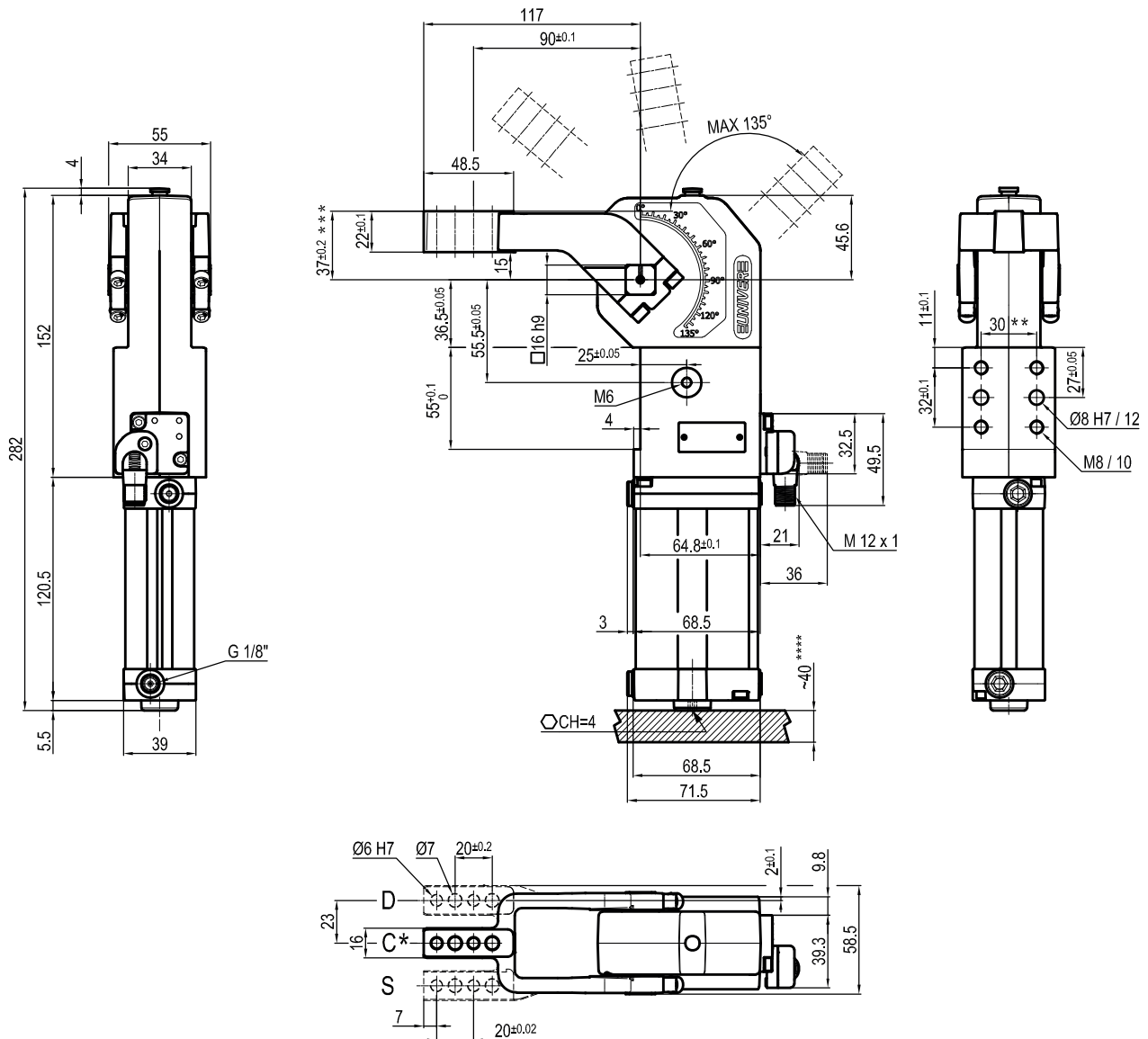
E = Central
 F = Right
 L = Left

7 ARM TYPE

A = Aluminium
 S = Steel

Bore Ø	Holding moment	Clamping moment (0,5 MPa)	Weight (clamping arm not included)
40 mm	600 Nm	170 Nm	1,6 Kg

Min./Max. operating pressure: **0,4 / 0,6 MPa**
 Operating temperature: **5° ÷ 45° C**
 Opening angle: **adjustable from 0° to 135°**
 Arm position: **180°**
 Electronic sensor with M12 swivel connector, from 0° to 90°
 Supply voltage: **10 ÷ 30 Vdc**
 IP code: **IP 65**
 Pneumatic ports on both sides



* : "E" CENTRAL - Ø50 / Ø63 mm SIZES COMPATIBLE
 **: TOLERANCE BETWEEN DOWELS ± 0,02, BETWEEN SCREW HOLES ± 0,1
 *** : TOLERANCE AT 80 mm FROM PIVOT POINT
 **** : AREA TO ACCESS ANGLE ADJUSTMENT

UCIP40V __ AKO
6 ARM STYLE

7 ARM TYPE

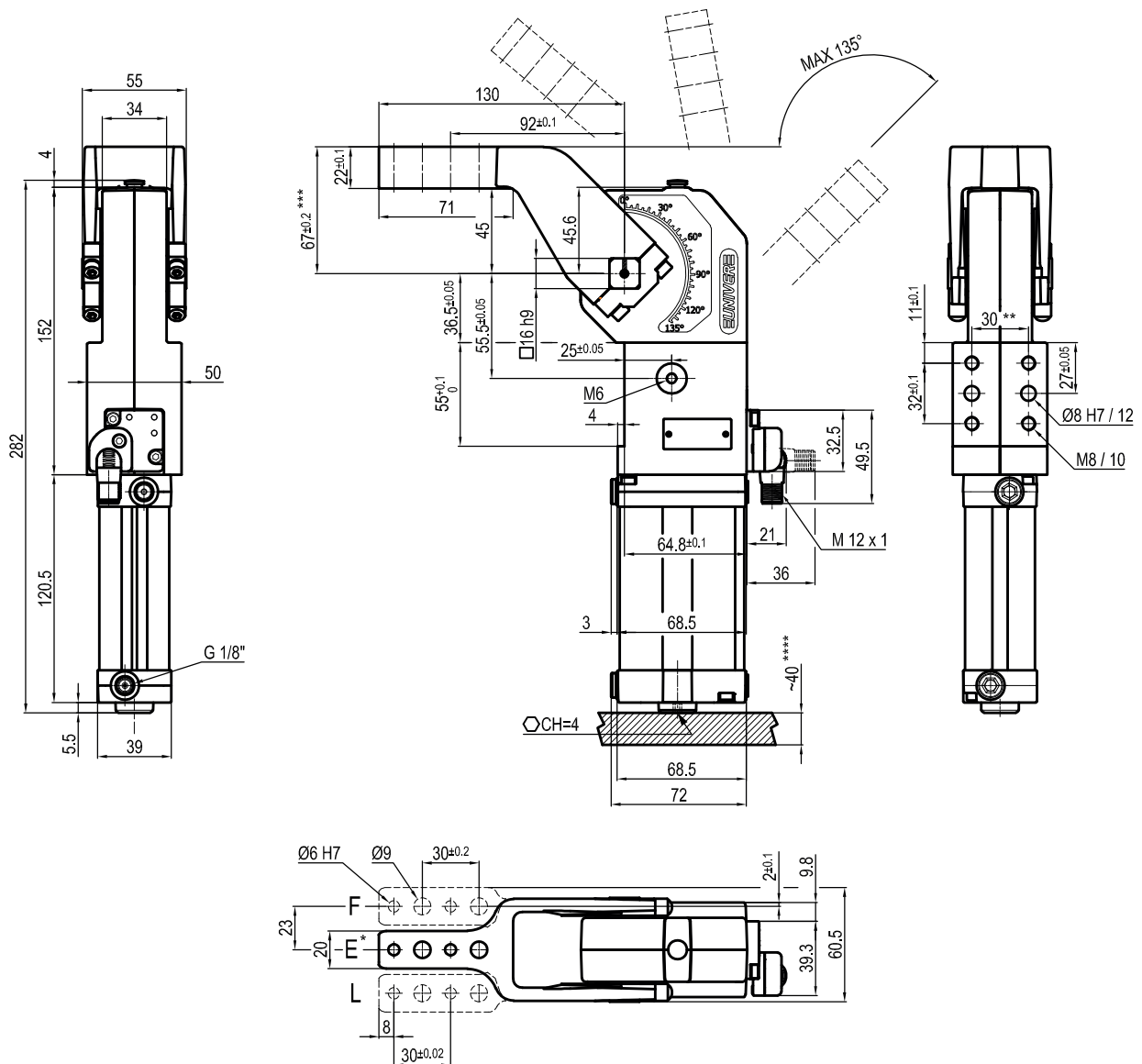
6 7

 C = Central
 S = Right
 D = Left

 A = Aluminium
 S = Steel

Bore Ø	Holding moment	Clamping moment (0,5 MPa)	Weight (clamping arm not included)
40 mm	600 Nm	170 Nm	1,6 Kg

Min./Max. operating pressure: **0,4 / 0,6 MPa**
 Operating temperature: **5° ÷ 45° C**
 Opening angle: **adjustable from 0° to 135°**
 Arm position: **90°**
 Electronic sensor with M12 swivel connector, from 0° to 90°
 Supply voltage: **10 ÷ 30 Vdc**
 IP code: **IP 65**
 Pneumatic ports on both sides



* : "E" CENTRAL - Ø50 / Ø63 mm SIZES COMPATIBLE
 **: TOLERANCE BETWEEN DOWELS ± 0,02, BETWEEN SCREW HOLES ± 0,1
 *** : TOLERANCE AT 80 mm FROM PIVOT POINT
 **** : AREA TO ACCESS ANGLE ADJUSTMENT

UCIP40V __ AKO
6 ARM STYLE

7 ARM TYPE

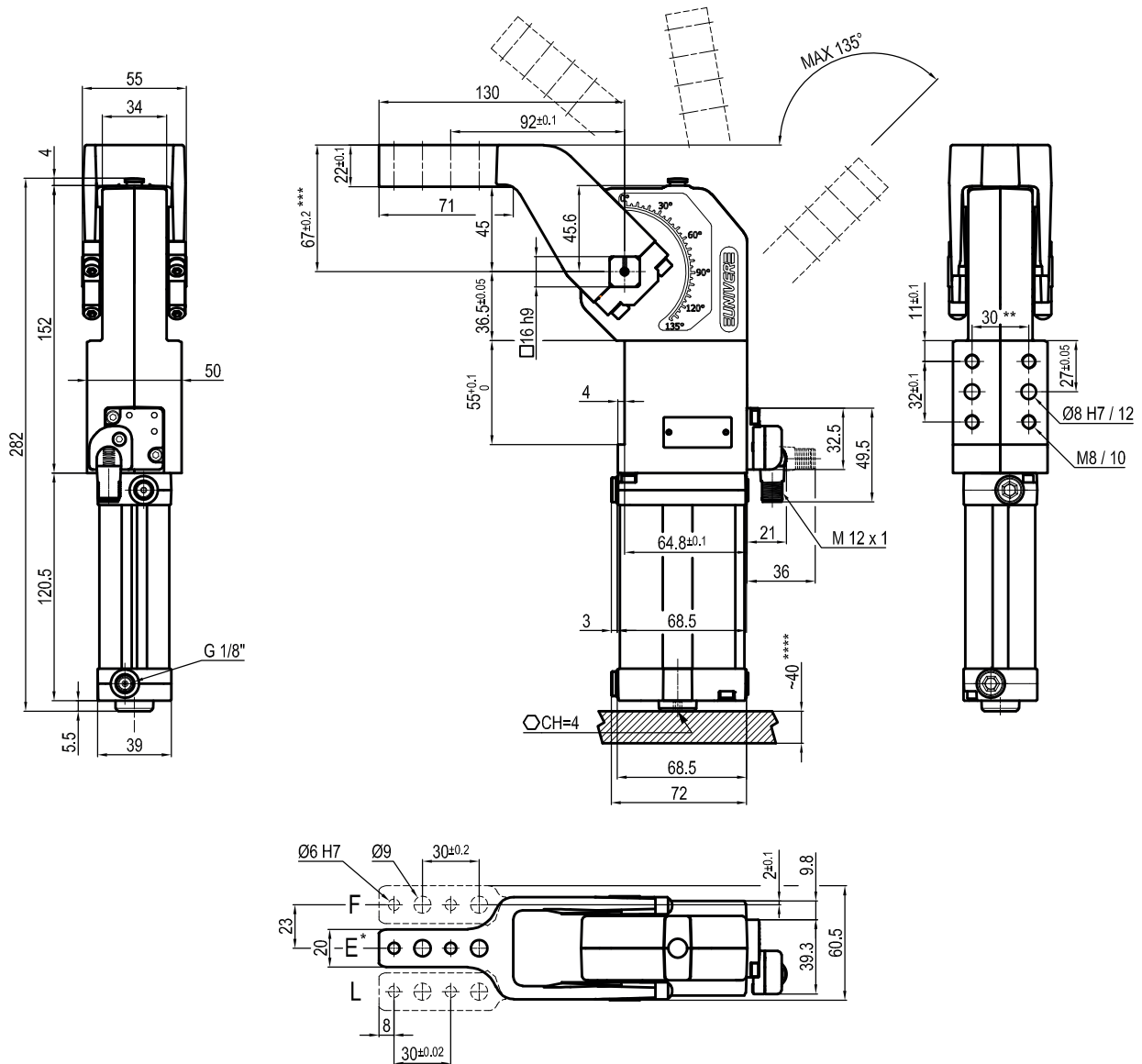
6 7

 E = Central
 F = Right
 L = Left

 A = Aluminium
 S = Steel

Bore Ø	Holding moment	Clamping moment (0,5 MPa)	Weight (clamping arm not included)
40 mm	600 Nm	170 Nm	1,6 Kg

Min./Max. operating pressure: **0,4 / 0,6 MPa**
 Operating temperature: **5° ÷ 45° C**
 Opening angle: **adjustable from 0° to 135°**
 Arm position: **90°**
 Electronic sensor with M12 swivel connector, from 0° to 90°
 Supply voltage: **10 ÷ 30 Vdc**
 IP code: **IP 65**
 Pneumatic ports on both sides



* : "E" CENTRAL - Ø50 / Ø63 mm SIZES COMPATIBLE
 **: TOLERANCE BETWEEN DOWELS ± 0,02, BETWEEN SCREW HOLES ± 0,1
 *** : TOLERANCE AT 80 mm FROM PIVOT POINT
 **** : AREA TO ACCESS ANGLE ADJUSTMENT

UCIP40V __ NK0
6 7
6 ARM STYLE

 E = Central
 F = Right
 L = Left

7 ARM TYPE

 A = Aluminium
 S = Steel

Bore Ø	Holding moment	Clamping moment (0,5 MPa)	Weight (clamping arm not included)
40 mm	600 Nm	170 Nm	1,6 Kg

Min./Max. operating pressure: **0,4 / 0,6 MPa**
 Operating temperature: **5° ÷ 45° C**
 Opening angle: **adjustable from 0° to 135°**
 Arm position: **90°**
 Electronic sensor with M12 swivel connector, from 0° to 90°
 Supply voltage: **10 ÷ 30 Vdc**
 IP code: **IP 65**
 Pneumatic ports on both sides