

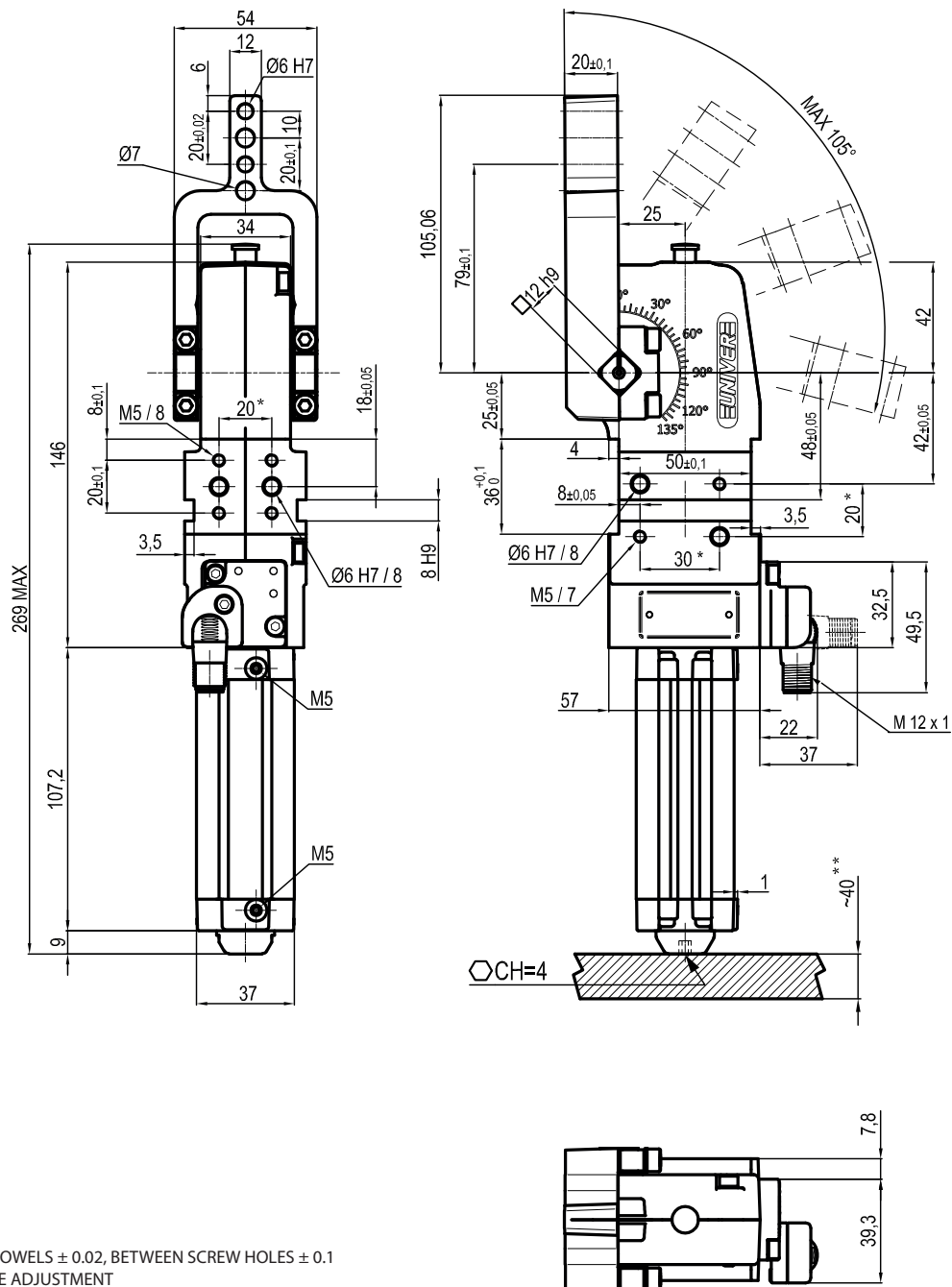
\* : TOLERANCE BETWEEN DOWELS  $\pm 0.02$ , BETWEEN SCREW HOLES  $\pm 0.1$   
 \*\* : AREA TO ACCESS ANGLE ADJUSTMENT

Size $\varnothing$	Cylinder bore $\varnothing$	Holding moment	Clamping moment (0,5 MPa)	Weight (clamping arm not included)
32 mm	25 mm	250 Nm	50 Nm	1,2 Kg

Min./Max. operating pressure: **0,4/0,6 MPa**  
 Operating temperature: **5° ÷ 45° C**  
 Opening angle: **adjustable**  
 Without arm  
 Electronic sensor with M12 swivel connector, from 0° to 90°  
 Supply voltage: **10 ÷ 30 Vdc**  
 IP code: **IP 65**

Subject to technical modifications without notice

Rev. 01 25.07.22

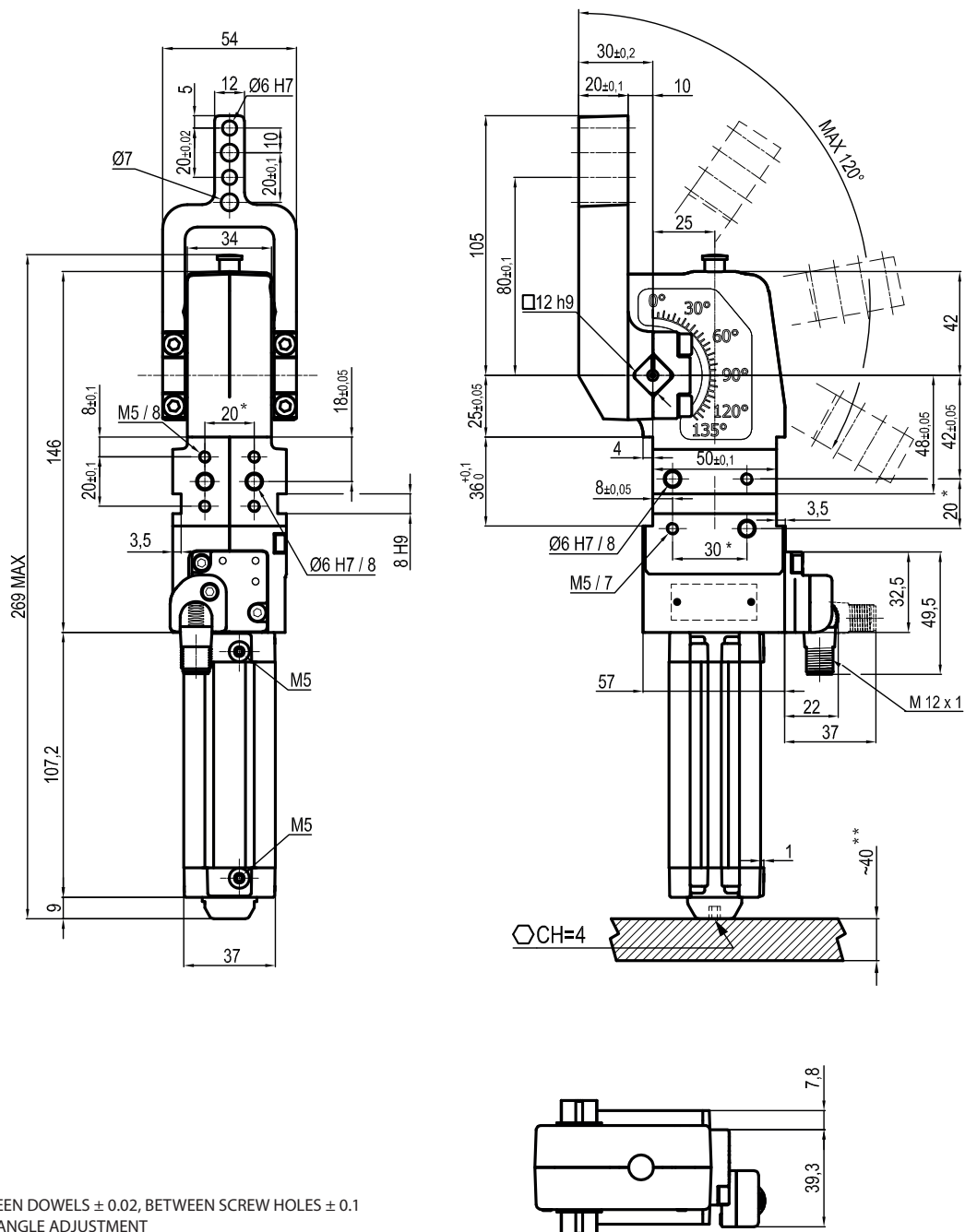


\* : TOLERANCE BETWEEN DOWELS  $\pm 0.02$ , BETWEEN SCREW HOLES  $\pm 0.1$   
 \*\* : AREA TO ACCESS ANGLE ADJUSTMENT

Size $\varnothing$	Cylinder bore $\varnothing$	Holding moment	Clamping moment (0,5 MPa)	Weight (clamping arm not included)
32 mm	25 mm	250 Nm	50 Nm	1,2 Kg

Min./Max. operating pressure: **0,4 / 0,6 MPa**  
 Operating temperature: **5° ÷ 45° C**  
 Opening angle: **adjustable from 0° to 105°**  
 Arm position: **180°**  
 Electronic sensor with M12 swivel connector, from 0° to 90°  
 Supply voltage: **10 ÷ 30 Vdc**  
 IP code: **IP 65**

Subject to technical modifications without notice



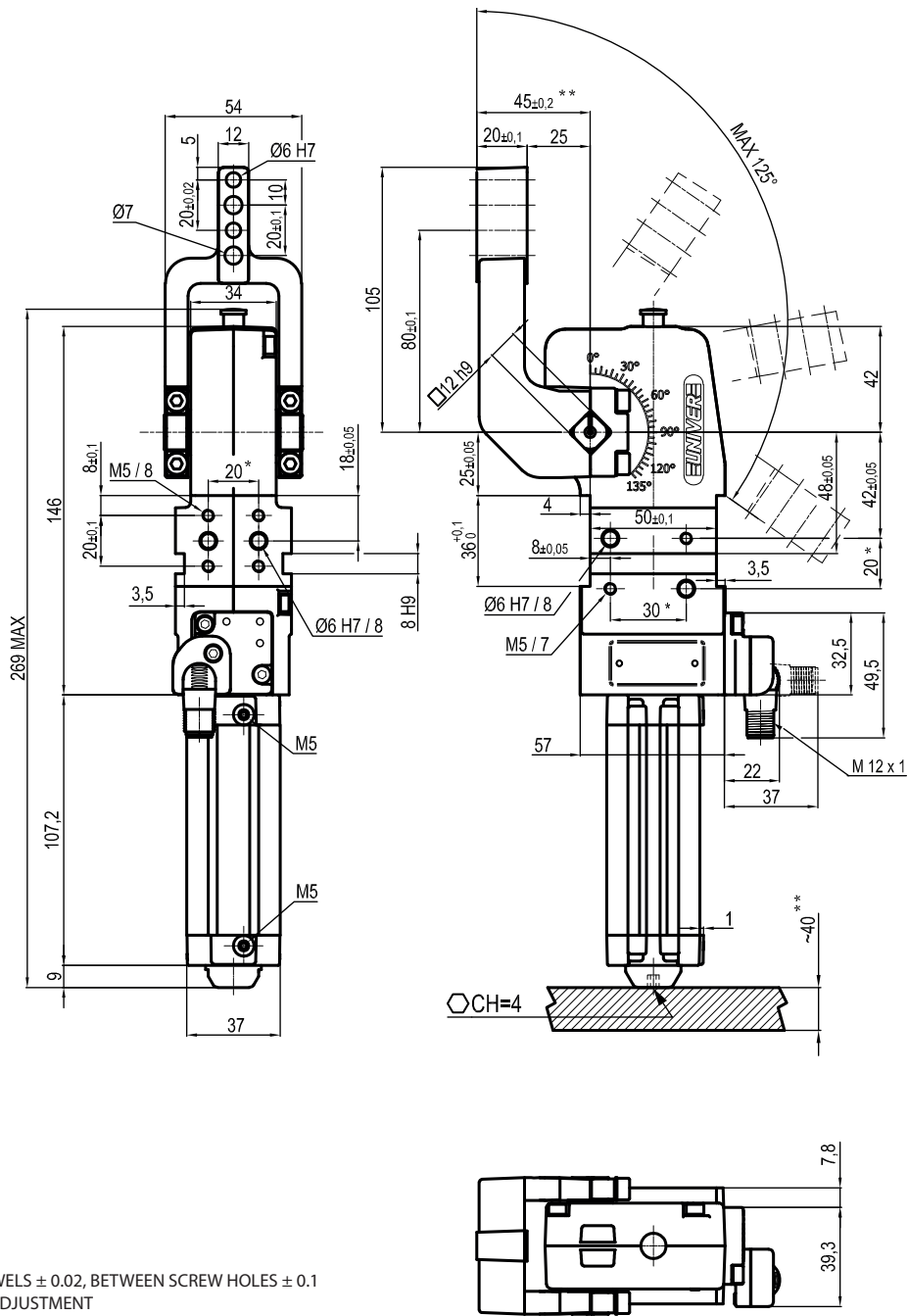
\* : TOLERANCE BETWEEN DOWELS  $\pm 0.02$ , BETWEEN SCREW HOLES  $\pm 0.1$   
 \*\* : AREA TO ACCESS ANGLE ADJUSTMENT

Size $\varnothing$	Cylinder bore $\varnothing$	Holding moment	Clamping moment (0,5 MPa)	Weight (clamping arm not included)
32 mm	25 mm	250 Nm	50 Nm	1,2 Kg

Min./Max. operating pressure: **0,4 / 0,6 MPa**  
 Operating temperature: **5° ÷ 45° C**  
 Opening angle: **adjustable from 0° to 120°**  
 Arm position: **180°**  
 Electronic sensor with M12 swivel connector, from 0° to 90°  
 Supply voltage: **10 ÷ 30 Vdc**  
 IP code: **IP 65**

Subject to technical modifications without notice

Rev. 01 28.01.22

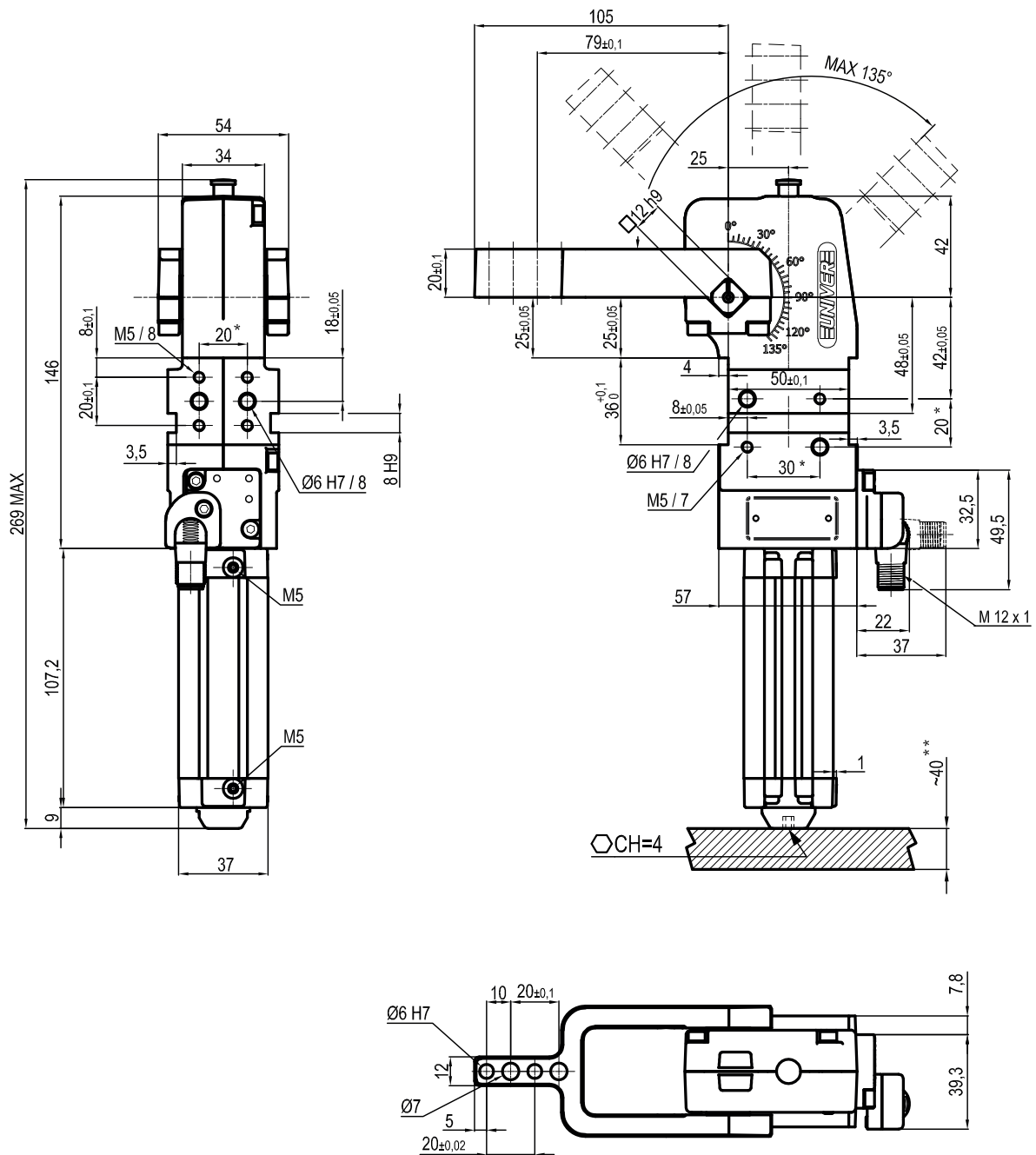


\* : TOLERANCE BETWEEN DOWELS  $\pm 0.02$ , BETWEEN SCREW HOLES  $\pm 0.1$   
 \*\* : AREA TO ACCESS ANGLE ADJUSTMENT

Size $\varnothing$	Cylinder bore $\varnothing$	Holding moment	Clamping moment (0,5 MPa)	Weight (clamping arm not included)
32 mm	25 mm	250 Nm	50 Nm	1,2 Kg

Min./Max. operating pressure: **0,4 / 0,6 MPa**  
 Operating temperature: **5° ÷ 45° C**  
 Opening angle: **adjustable from 0° to 125°**  
 Arm position: **180°**  
 Electronic sensor with M12 swivel connector, from 0° to 90°  
 Supply voltage: **10 ÷ 30 Vdc**  
 IP code: **IP 65**

Subject to technical modifications without notice



\* : TOLERANCE BETWEEN DOWELS  $\pm 0.02$ , BETWEEN SCREW HOLES  $\pm 0.1$

\*\* : AREA TO ACCESS ANGLE ADJUSTMENT

Size $\varnothing$	Cylinder bore $\varnothing$	Holding moment	Clamping moment (0,5 MPa)	Weight (clamping arm not included)
32 mm	25 mm	250 Nm	50 Nm	1,2 Kg

Min./Max. operating pressure: **0,4 / 0,6 MPa**

Operating temperature: **5° ÷ 45° C**

Opening angle: **adjustable from 0° to 135°**

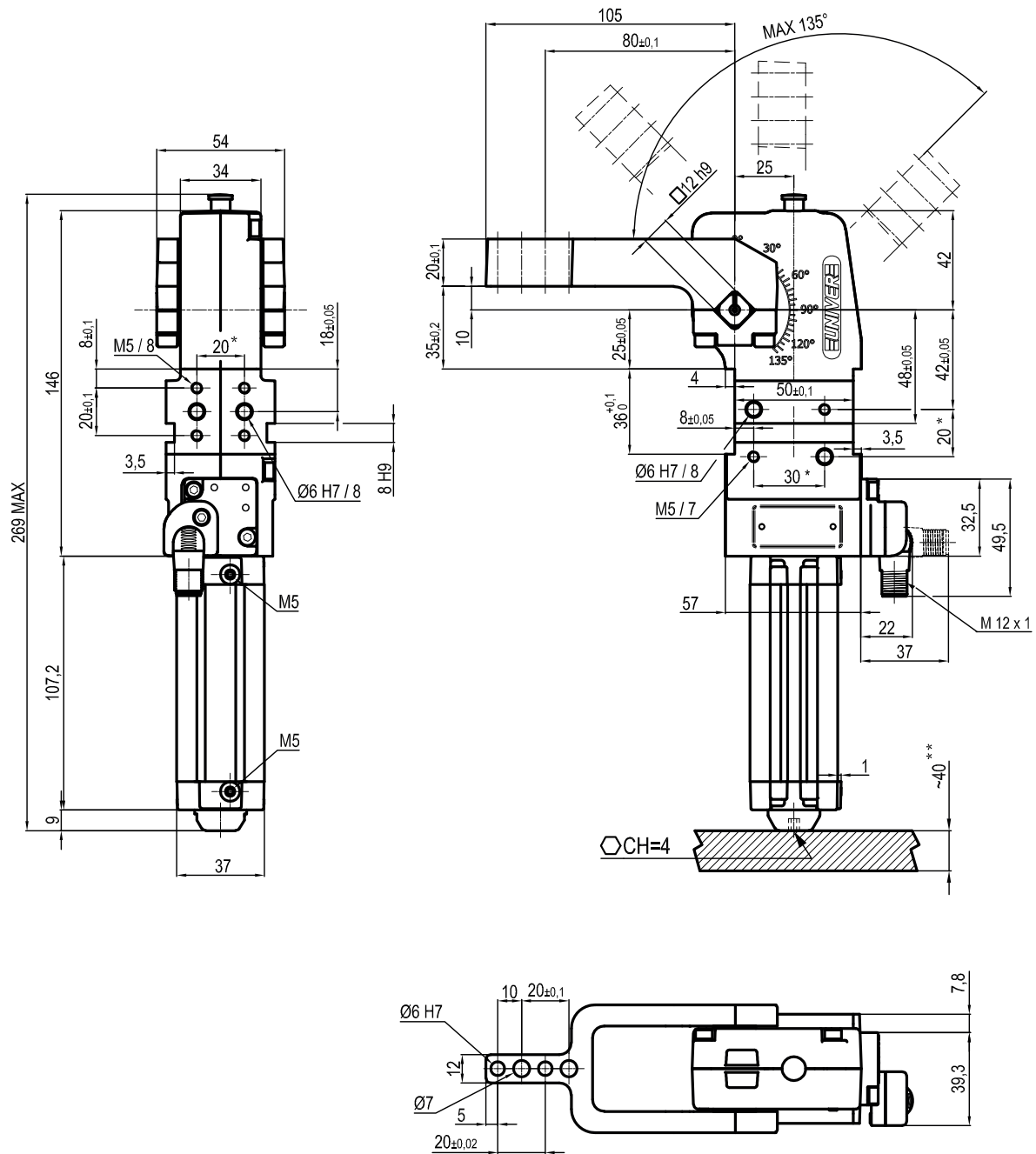
Arm position: **90°**

Electronic sensor with M12 swivel connector, from 0° to 90°

Supply voltage: **10 ÷ 30 Vdc**

IP code: **IP 65**

Subject to technical modifications without notice



\* : TOLERANCE BETWEEN DOWELS  $\pm 0.02$ , BETWEEN SCREW HOLES  $\pm 0.1$

\*\* : AREA TO ACCESS ANGLE ADJUSTMENT

Size $\varnothing$	Cylinder bore $\varnothing$	Holding moment	Clamping moment (0,5 MPa)	Weight (clamping arm not included)
32 mm	25 mm	250 Nm	50 Nm	1,2 Kg

Min./Max. operating pressure: **0,4 / 0,6 MPa**

Operating temperature: **5° ÷ 45° C**

Opening angle: **adjustable from 0° to 135°**

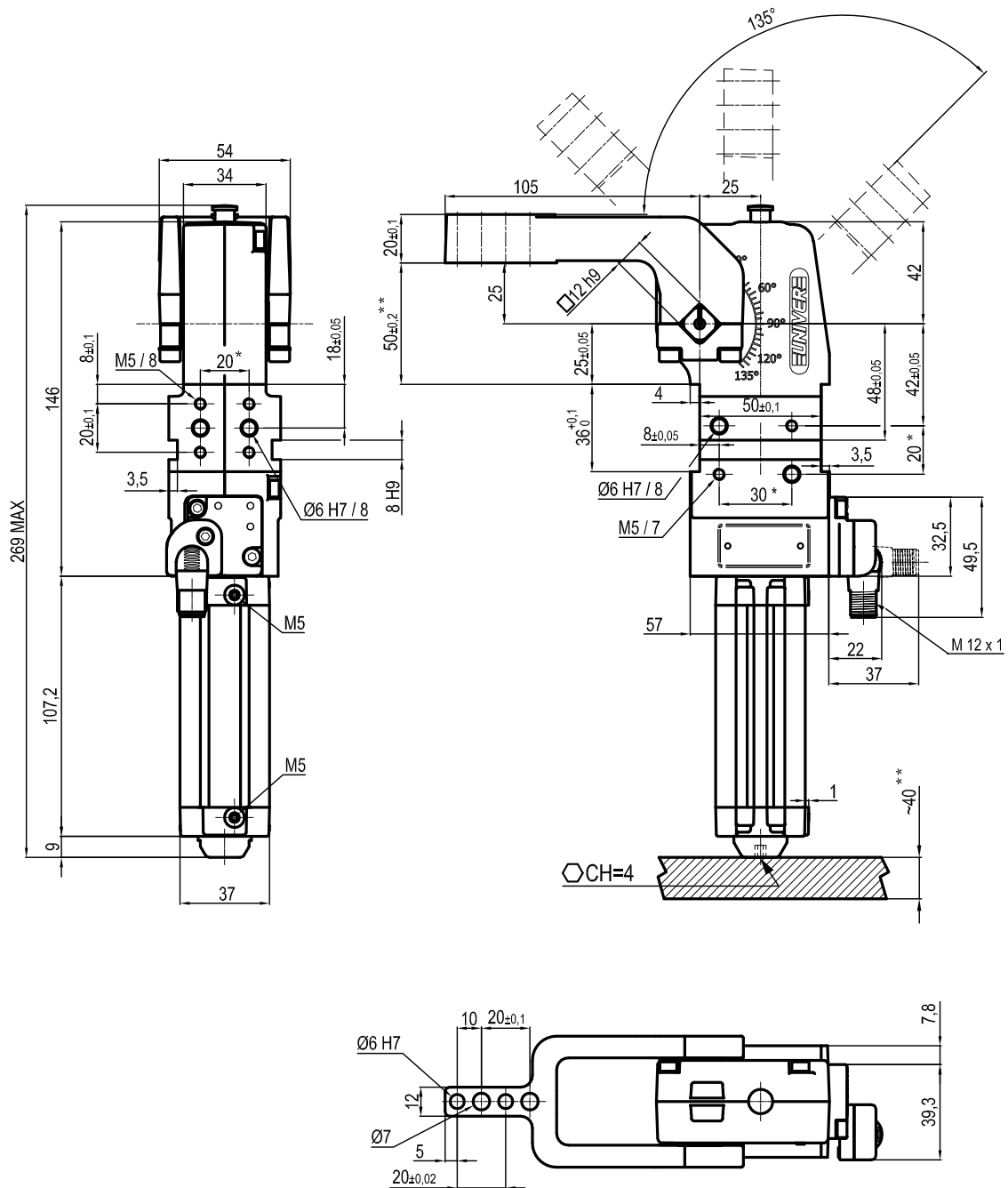
Arm position: **90°**

Electronic sensor with M12 swivel connector, from 0° to 90°

Supply voltage: **10 ÷ 30 Vdc**

IP code: **IP 65**

Subject to technical modifications without notice



\* : TOLERANCE BETWEEN DOWELS  $\pm 0.02$ , BETWEEN SCREW HOLES  $\pm 0.1$

\*\* : AREA TO ACCESS ANGLE ADJUSTMENT

Size $\varnothing$	Cylinder bore $\varnothing$	Holding moment	Clamping moment (0,5 MPa)	Weight (clamping arm not included)
32 mm	25 mm	250 Nm	50 Nm	1,2 Kg

Min./Max. operating pressure: **0,4 / 0,6 MPa**

Operating temperature: **5° ÷ 45° C**

Opening angle: **adjustable from 0° to 135°**

Arm position: **90°**

Electronic sensor with M12 swivel connector, from 0° to 90°

Supply voltage: **10 ÷ 30 Vdc**

IP code: **IP 65**

Subject to technical modifications without notice