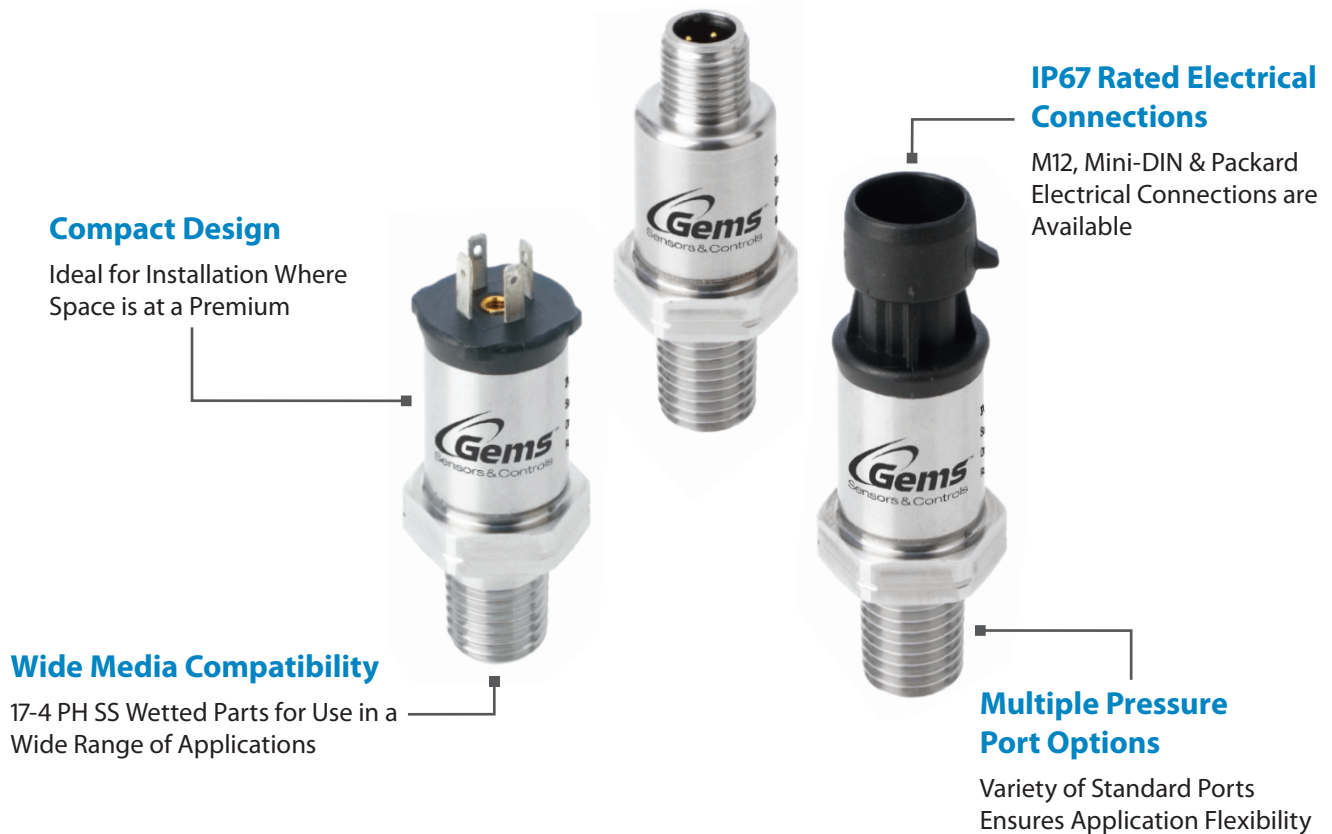


Compact, Low-Cost Pressure Sensor

CPS-100 Series: Designed For Reliable Performance in Challenging Locations at a Competitive Price



Value Engineered, Dependable Design

The CPS-100 Series features 0.25% Full Scale (FS) accuracy, designed for more than 100M repeatable cycles.

Reliable Operation Across Wide Pressure Ranges

The CPS-100 Series is available to fit all your applications needs with models from 0-150 psi (0-10 bar), up to 0-1,500 psi (0-100 bar).

Hermetically-Sealed Pressure Cavity

The CPS-100 Series has no internal O-rings or seals, which eliminates the potential for leaks.

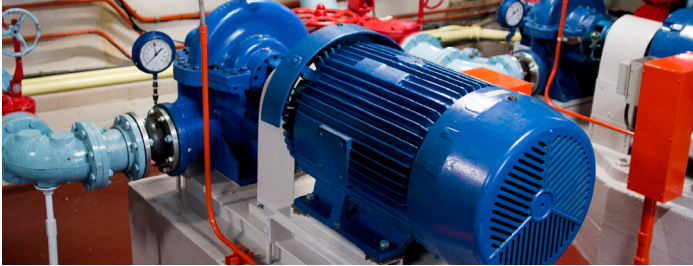
Highly Compatible with Harsh Chemicals & Environments

The CPS-100 Series contains 17-4 PH Stainless Steel wetted parts and an all welded construction.



CPS-100 Series

Ready to Serve Your Most Demanding Applications



Water & Booster Pumps

Features 17-4 stainless steel construction



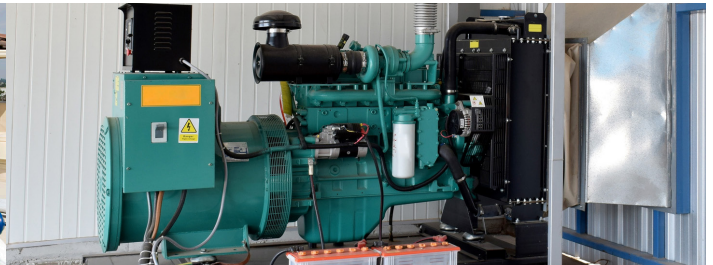
Air Compressors

High vibration resistance & sensor longevity



HVAC & R

Dependable performance at a competitive price



Power Generation

Reliable, constant pressure monitoring

CPS-100 Series Competitive Advantages

- ✓ **Operates Over Wide Media & Temperature Range** – Resistant to harsh chemicals and environments and operates from -40° F to +185° F (-40° C to +85° C)
- ✓ **Electronically Configurable** – Multiple outputs, electrical connections and pressure ports are available
- ✓ **Fast Power-On** – Ideal for remote and battery-powered installations where power draw must be minimized
- ✓ **Lightweight, Compact Design** – Product is less than 2 inches (50 mm) long and weighs under 2 ounces (75 grams)
- ✓ **High Vibration Resistance** – Able to provide accurate readings under harsh environmental conditions
- ✓ **Zero Leakage** – Hermetically-sealed pressure assembly
- ✓ **Approvals** – CE and RoHS

CPS-100 Series Options

- ✓ **Electrical Conductions**
 - Industrial DIN 9.4 mm
 - M12 x 1
 - Packard MetriPack
- ✓ **Pressure Ranges**
 - 0-150 PSI to 0-1,500 PSI (0-10 bar to 0-100 bar) Ranges
- ✓ **Pressure Ports**
 - G 1/4" - 19 External
 - 1/4" - 18 NPT
 - G 1/4" - 19 A Integral Face Seal
 - 1/8" - 27 NPT
 - Schrader SAE #4, 7/16" Internal

Visit gemssensors.com to View Our Full Range of Products



PS61 Sub-Miniature Pressure Switches



PS71 Hydraulic Pressure Switches



LS-3 Liquid Level Switches



XM/XT-700 Liquid Level Sensors