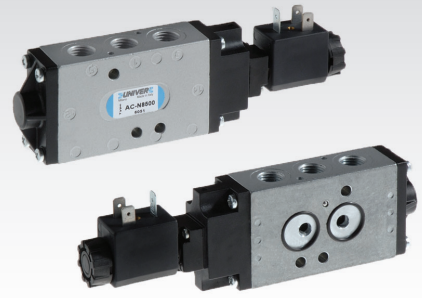


CHARACTERISTICS

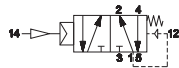
Ambient temperature	-10 ÷ +45 °C
Fluid	50 µm filtered air, with or without lubrication
Commutation system	poppet mixed
Max pressure	10 bar
Connections	G1/4 (1-3-5), NAMUR interface (2-4)
Nominal bore (mm)	8
Nominal flow rate (NI/min)	1200
Valve body	zamak
Seals	NBR, polyurethane
Spool	aluminium
Electropilot/Coil	AA series/U1-U3
Power consumption	3,5 W (DC), 5 VA (AC)
Connector	AM-5110
Voltage	2 V DC - 24 V DC - 24 V AC - 110 V AC - 230 V AC
Manual override	impulse screw - 2 positions



Available ATEX version upon request
 II 2Gc IIC T5 II 2Dc T100°C

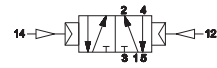
Pneumatic impulse

■ Single impulse



AC-N8100

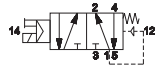
■ Double impulse



AC-N8120

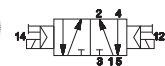
Electrical impulse

■ Single impulse



AC-N8500

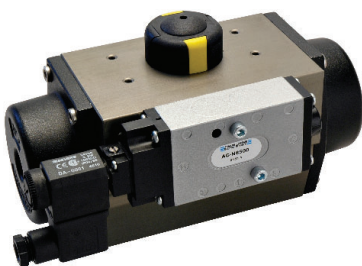
■ Double impulse



AC-N8520

Version 3/2: valves are supplied with proper flat plug for closing unused way
 Solenoid valves are supplied without coil / connector / locking nut

■ AC-N8500 with YR2 actuator



See ATEX Catalogue for types and versions