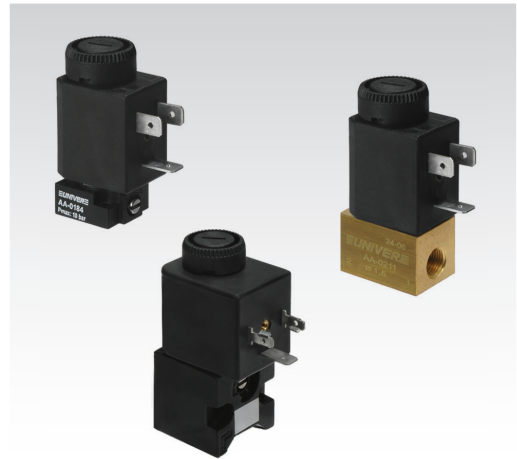


**CHARACTERISTICS**

Ambient temperature	-10 ÷ +50 °C			
Fluid	50 µm filtered air, with or without lubrication; neutral gases (versions for different fluids available upon request)			
Commutation system	direct intervention poppet with cushioned seals			
Pressure	0 ÷ 10 bar (2/2, 3/2 NC), 3 ÷ 10 bar (3/2 NO)			
Connections	on sub-base / threaded on the body			
	sub-base	G 1/8	M5	CNOMO
Nominal bore (mm)	1,2 ÷ 1,5	1 ÷ 1,5	1 ÷ 1,5	1,2 ÷ 1,5
Nominal flow rate (NI/min)	30 ÷ 60	28 ÷ 60	30 ÷ 60	33 ÷ 45
Power consumption	3,5 W (DC) - 5 VA (AC)		2,5 W (DC) - 3,3 VA (AC)	
Connector	AM-5110		AM-5111	
Sleeve	U1			
Coil	DA - DC			
Voltage	12 V DC - 24 V DC - 24 V AC - 110 V AC - 230 V AC			
Protection degree	IP65			



Available ATEX version upon request  
 CE Ex II 2Gc IIC T5 II 2Dc T100°C

**U1 Sleeves - with moving core**

**Coil-sleeve locking nuts**



**2/2 - 3/2 U1 Electropilot**

**2/2 - 3/2 U1 Electropilot G1/8**

■ For mounting on U1 G1/8 sub-base



**2/2 - 3/2 U1 Electropilot M5**

**2/2 - 3/2 U1 CNOMO Electropilot**

■ For mounting on U2 G1/8 SPEED sub-base



**SPEED Series modular sub-base**

■ U1 sub-base G1/8

■ CNOMO sub-base G1/8



Manual override:

Impulse screw – 2 positions (standard supplied), Recessed button - 1 position, Impulse screw - 1-2 positions, Locking nut with button – 1 position (upon request)

Solenoid valves are supplied without coil, connector and locking nuts

See ATEX Catalogue for types and versions