



PNS-V

PN2S-V

PN231-V

LINEAR TRANSDUCERS with analogue output

Series PNS-V • PN2S-V • PN231-V

- 50 to 950 mm strokes
- Excellent linearity
- Infinite resolution
- Easy mounting method
- M12 Connector
- IP65 protection degree

PNS-V	PN2S-V	PN231-V
Strokes: 50 to 950 mm	Strokes: 50 to 500 mm	Strokes: 50 to 750 mm
• rod Ø 6 mm	• rod Ø 6 mm	• rod Ø 8 mm
• radial connector	• radial connector	• radial connector
	• two ball joints Ø 5 mm	• two ball joints Ø 8 mm

ELECTRICAL & OPERATING SPECIFICATIONS										
Series	PNS-V			PN2S-V			PN231-V			
Output signal	0÷10 V voltage output proportional to the position									
Supply voltage	18÷30 Vdc									
Strokes mm	50 •	100 •	150 •	200 •	250 •	300 •	400 •	500 •	750* •	950*
Linearity	±0.075%						±0.1%			
Resolution	Infinite									
Mechanical life	100 million									
Ripetibility	<0.01 mm									
Connections	4-pin M12 male connector									
Connector position	Radial			Radial			Radial			

*Stroke mm 750 available for series PNS-V, PN231V - Stroke mm 950 available for series PNS-V

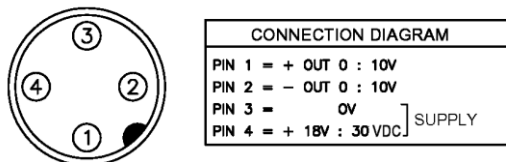
MECHANICAL & ENVIRONMENTAL SPECIFICATIONS					
Series	PNS-V		PN2S-V		PN231-V
Dimensions	See the drawing				
Materials: housing rod	Anodised aluminium with glass-filled nylon flanges				
	Stainless steel on self-lubricating bearings – free rotation				
Rod Ø	6 mm		6 mm		8 mm
Fixing	Freely movable clamping brackets or ball joints				
Stem max linear speed	5 m/sec				
Sliding friction	0.1 Kg – with return spring: 0.5 Kg				
Vibration resistance (10÷2000 Hz)	15 g				
Shock resistance (11 ms)	50 g				
Operating temperature	-20 ÷ 80°C				
Stocking temperature	-30 ÷ 90°C				
Protection degree	IP65				

STROKES

Series PNS-V • PN2S-V • PN231-V										
NOMINAL STROKE mm	50 •	100 •	150 •	200 •	250 •	300 •	400 •	500 •	750* •	950*
ELECTRICAL STROKE	Nominal stroke + 1 mm									
MECHANICAL STROKE	Nominal stroke + 3 mm									
*Stroke mm 750 available for series PNS-V, PN231V - Stroke mm 950 available for series PNS-V										

CONNECTIONS

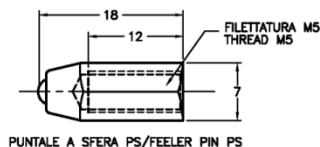
The electrical connection is granted by means of 4-pin M12 male connector.
Flying part not included.



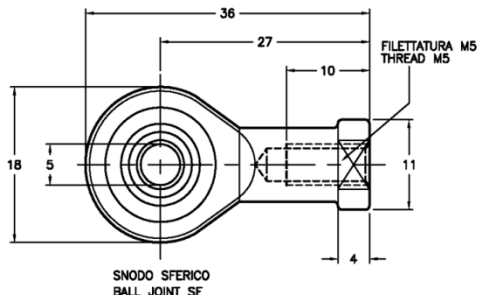
MOUNTING & OPTIONAL FITTINGS

The transducers are easily fastened by means of the provided **brackets**, which can be placed **freely along the body**.
Ball joints and self-aligning articulated joints can be used for **air-fixing**, allowing to compensate mounting mis-alignments.
The transducer series **PNS-V** can also be provided with **feeler pin**.

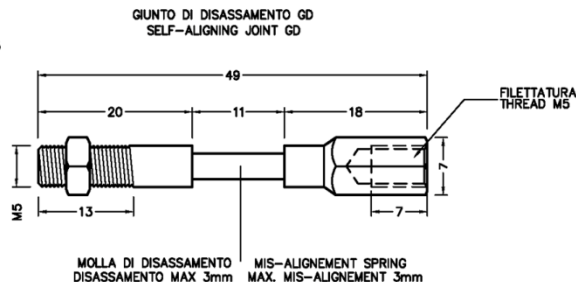
FEELER PIN



BALL JOINT



SELF-ALIGNING JOINT



REF. M1040/ M1041/M1039

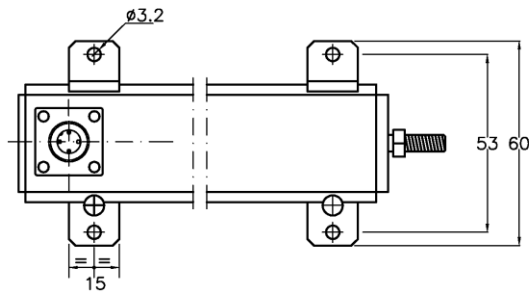
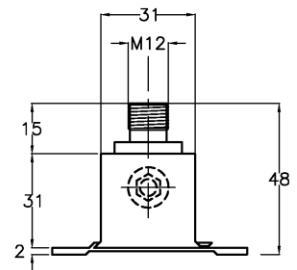
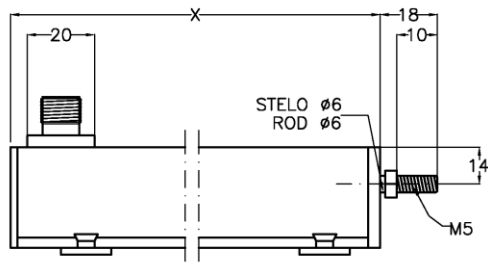
ORDERING INFORMATION

PNS-V	50	MR
TYPE	STROKE	FITTINGS
PNS-V	50 50 mm	(series PNS-V)
PN2S-V	100 100 mm	SF Ball joint
PN231-V	150 150 mm	GD Self-aligning joint
	200 200 mm	PS Feeler pin
	250 250 mm	
	300 300 mm	
	400 400 mm	
	500 500 mm	
	750 750 mm	
	950 950 mm *	
	*750 type PNS-V, PN231-V only	
	*950 type PNS-V only	

DIMENSIONS

Series PNS-V

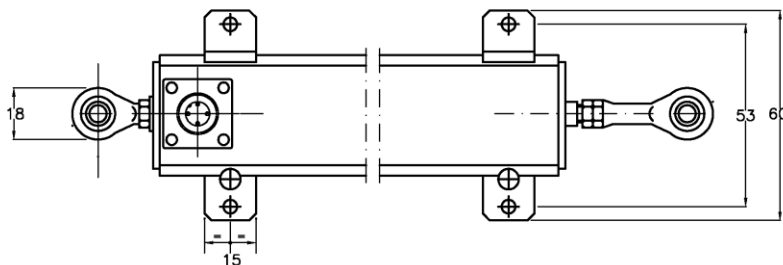
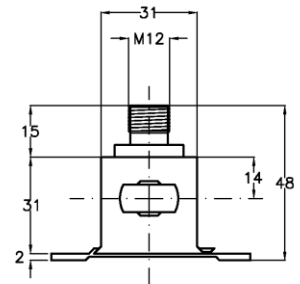
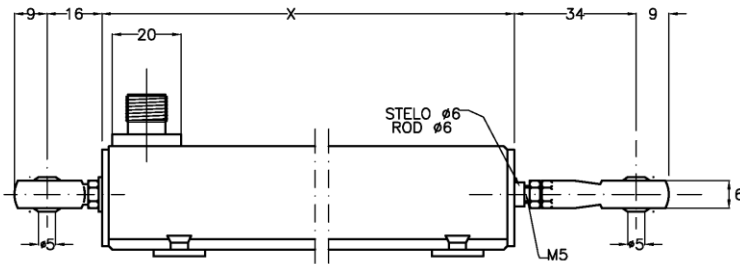
Ref M1269V



CORSA NOMINALE STROKE	X
50	190
100	240
150	290
200	340
250	390
300	440
400	540
500	640
750	890
950	1090

Series PN2S-V

Rie M2170V

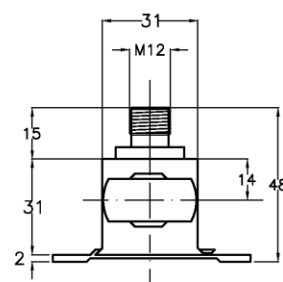
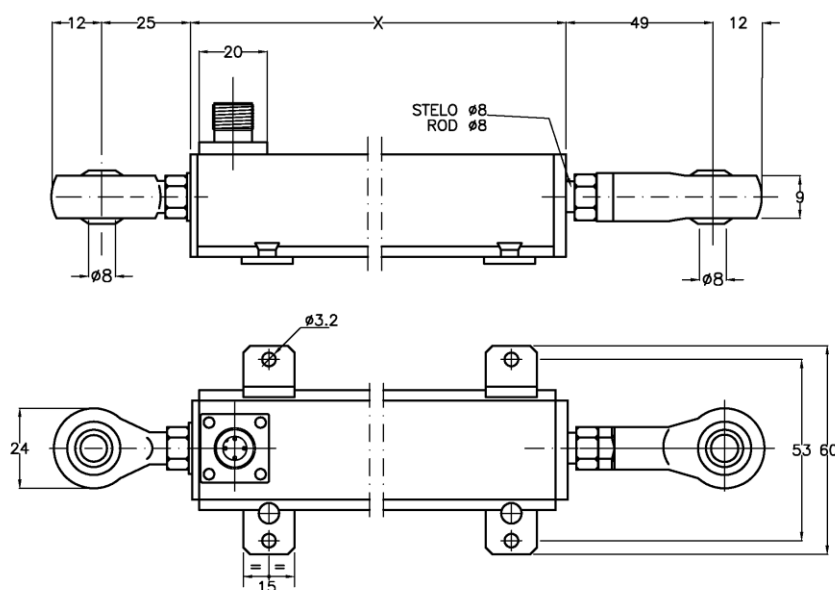


CORSA NOMINALE STROKE	X
50	187
100	237
150	287
200	337
250	387
300	437
400	537
500	637

DIMENSIONS

Serie PN231-V

Ref M1271V



CORSA NOMINALE STROKE	X
50	247
100	297
150	347
200	397
250	447
300	497
400	597
500	697
750	945



REFERENCES

Further information at:

Transducers PNS-V, PN2S-V, PN231-V

<https://www.elap.it/linear-potentiometers/pns-v-series/>



elap

ELAP VIA VITTORIO VENETO, 4 • I-20094 CORSICO (MI) • TEL. +39.02.4519561
FAX +39.02.45103406 • E-MAIL INFO@ELAP.IT • SITE WWW.ELAP.IT